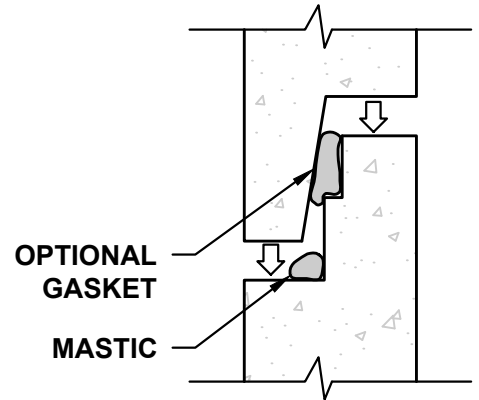


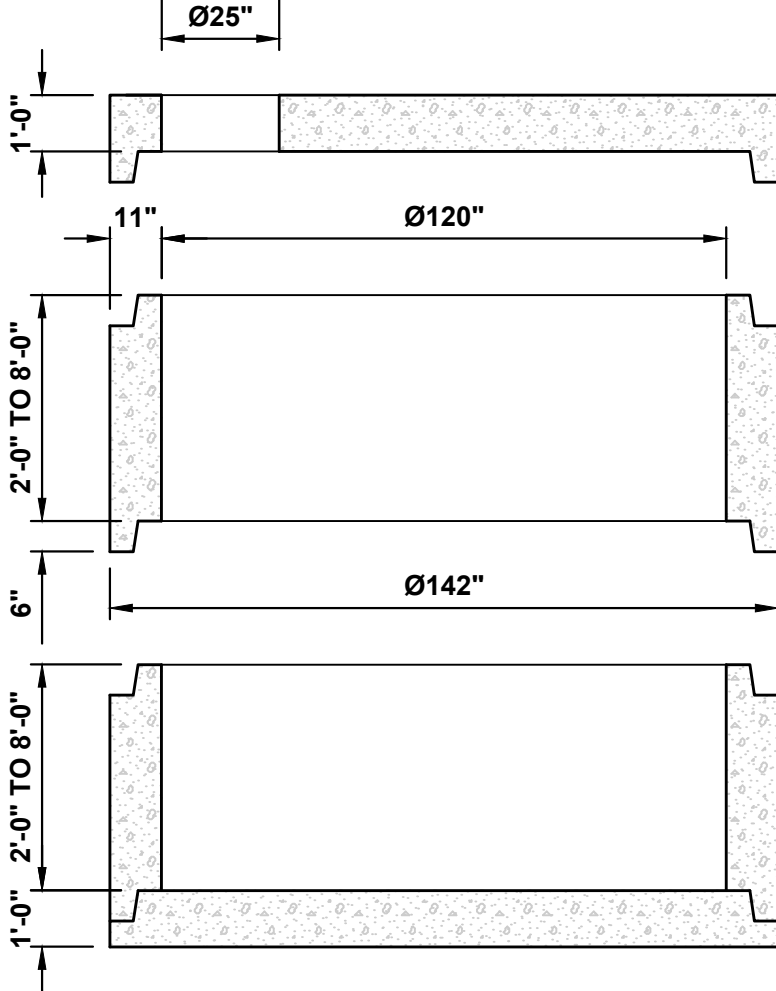
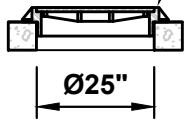
Ø120" MANHOLE - WITH FLAT TOP



JOINT DETAIL

STANDARD JOINT SEALANT IS MASTIC.
RUBBER GASKET IS OPTIONAL.

CAST IRON FRAMES AND COVERS ARE AVAILABLE IN SUBURBAN 3" HEIGHT AND STANDARD 7" HEIGHT (SUBURBAN 3" HEIGHT SHOWN)



120"x25" FLAT TOP
WEIGHT 18,150 LBS
120"x48" FLAT TOP (REDUCING)
WEIGHT 16,750 LBS

Ø120" MANHOLE SECTION
2'-0" (9,481 LBS)
3'-0" (14,293 LBS)
4'-0" (19,064 LBS)
5'-0" (23,875 LBS)
6'-0" (28,646 LBS)
7'-0" (33,459 LBS)
8'-0" (38,230 LBS)

Ø120" MANHOLE BASE
WEIGHT 15,375 LBS

SECTION VIEW

NOTES:

1. MANHOLE ASSEMBLY CONFORMS TO ASTM-C478.
2. ALL MANHOLE JOINTS SEALED WITH MASTIC OR RUBBER GASKET.
3. WEIGHTS LISTED ARE APPROXIMATE.
4. GRADE RINGS AVAILABLE AS NEEDED.